



LPG
GROUP



Our Nozzles are installed in lot
of gas stations around the world.

They are handled thousands of times
every single day, held, used, dropped by
distraction and constantly in contact
with aggressive substances and used
even in extreme climatic situations.

That's why we designed and realized
the HQ range.

HQ: Italian high quality
which guarantees you the maximum
efficiency and resistance.



LPG 700 Series

HQ

The nozzles providing LPG are an Italian product with an excellent quality.

The full range is the result of 30 years of strong background.

They are produced totally in Italy in LPG Industrial plant with high quality raw materials and it's produced in order obtain the best efficiency.

Type of coupling: ITALIA-DISH

Release system: UNHOOKING SYSTEM it allows disconnect the nozzle from the taken over with a simply movement of a finger.

Available colours: black plastic and body with an aluminium sleeve.

Materials: aluminium, brass, NBR and nylon.

They ensure a high resistance keeping a value for money.

Maintenance: easy and programmable.

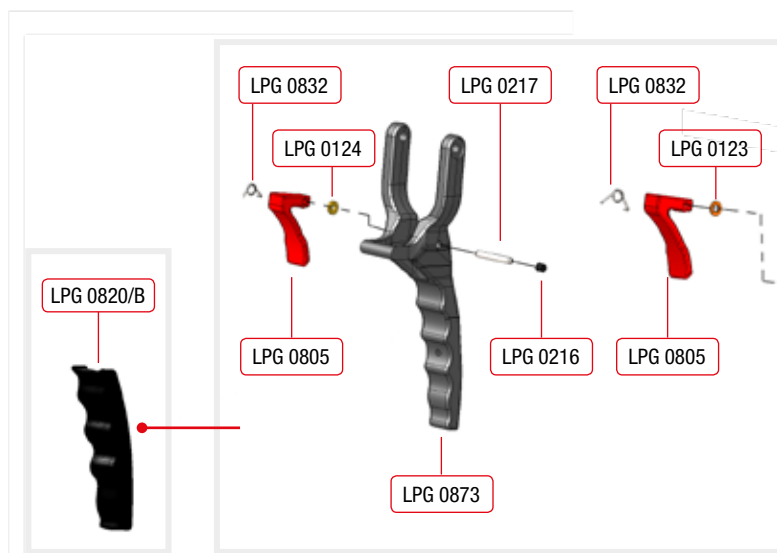
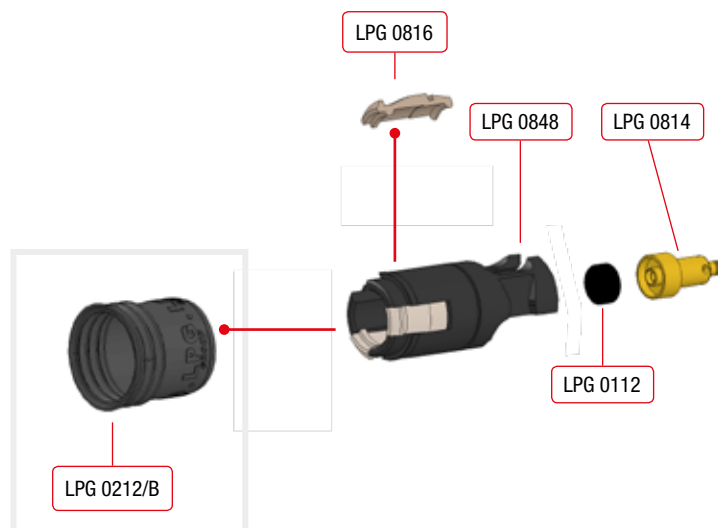
It can be carried out by one of your operators and it will maintain your nozzle perfectly efficient and safe.

Safety: "FOOLPROF SYSTEM" block the release of gas if the nozzle is correctly hooked on car taken over. The system allows a perfect alignment between the parts (attack-taken over) by keeping the gas inside and by avoiding a discomfort for the operator.

Release of LPG: extremely low during disconnection.

Optional: lever for housing in nozzle boot of the NBL Series.

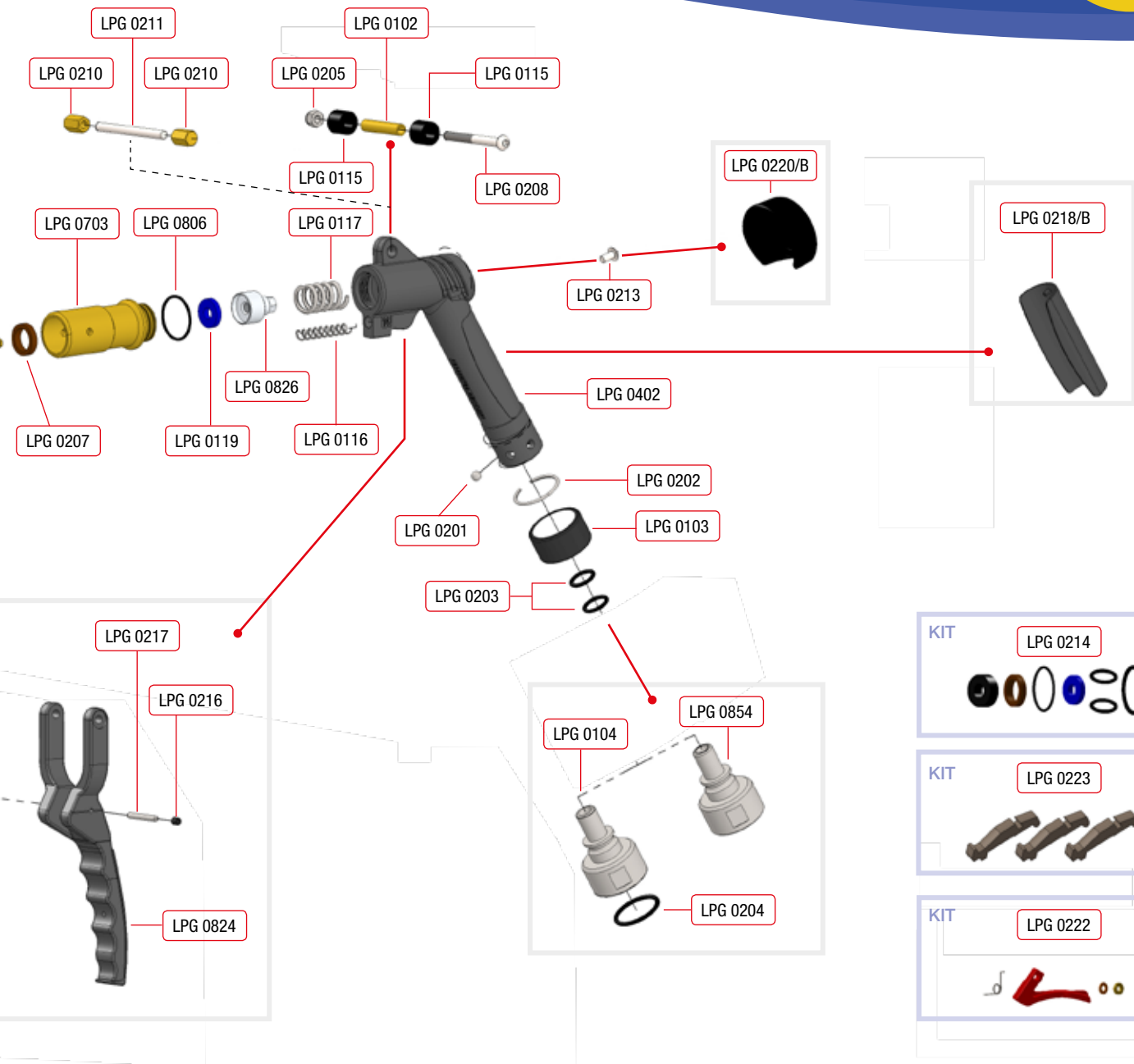
All of our products are ATEX certified.



Code	Q.ty	Article	Materials
LPG 0102	1	Bushing	Brass
LPG 0103	1	Plus Bush	Steel
LPG 0104	1	Swivel 1" Gas	Steel
LPG 0112	1	Piston Gasket	Nbr
LPG 0115	2	Roll	Abs
LPG 0116	1	Spring Sleeve	Steel
LPG 0117	1	Spring Head	Steel
LPG 0119	1	Valve Gasket	Sealthane
LPG 0123	1	Trigger Spacer	Steel
LPG 0124	1	Trigger Spacer	Steel
LPG 0201	6	Ball	Steel
LPG 0202	1	Flexible Ring	Steel
LPG 0203	2	Body O-Ring	Nbr
LPG 0204	1	Swivel O-Ring	Nbr

LPG 700 Series

HQ










Code	Q.ty	Article	Materials
LPG 0205	1	Nut	Steel
LPG 0207	1	Lip Gasket	Nbr
LPG 0208	1	Bolt	Steel
LPG 0210	1	Nut	Brass
LPG 0211	1	Screwed Pin	Steel
LPG 0212/B	1	Black Dust Cover	Nbr
LPG 0213	1	Bolt	Steel
LPG 0214	1	Gasket Kit Standard	
LPG 0216	1	Lever Screw	Steel
LPG 0217	1	Trigger Pin	Steel
LPG 0218/B	1	Black Body Cover	Abs
LPG 0220/B	1	Black Body Insert	Abs
LPG 0222	1	Trigger Kit	
LPG 0223	1	Plus Hammer Kit	

Code	Q.ty	Article	Materials
LPG 0402	1	Series Body HQ Black	Aluminium
LPG 0703	1	Head Plus	Brass
LPG 0805	1	Trigger	Tecnopolim.
LPG 0806	1	Head O-Ring	Nbr
LPG 0814	1	Plus Piston	Brass
LPG 0816	3	Plus Hammer	Brass
LPG 0820/B	1	Black Lever Cover	Abs
LPG 0824	1	Black Standard Lever	Aluminium
LPG 0826	1	Valve	Aluminium
LPG 0832	1	Trigger Spring	Steel
LPG 0848	1	500 Series Aluminium Sleeve	Aluminium
LPG 0854	1	Swivel NPT 3/4	Steel
LPG 0873	1	Black Lever with HS	Aluminium



LPG 740HQ IGSB

Colour		
Code	B = Black	
Screw		
Type	S = Standard	F = France
Swivel		
Type	G = 1" Gas	N = 3/4" NPT
Sleeve		
Type	I = Italia - DISH	
Lever		
Type	0 = Standard	1 = Standard+HS
Sleeve material		
Type	4 = Aluminium	
Body		
Type	7 = Series HQ Black	

Maximum operating pressure	25 Bar
Static test	40 Bar
Dynamic test	25 Bar
Maximum flow rate	40 l/min @ 8 bar
Release of gas when disconnected	0,98 cm ³
Operating temperature	-40°C ÷ +85°C

Weight	1,25 Kg
Type of coupling	Italia - DISH
Hooking on car	N° 3 Plus Hammers
Swivel connection	1" Gas - 3/4 NPT
Sleeve made of anti-spark material	

INSTRUCTION OF NOZZLE USE

- 

Align nozzle' sleeve to the vehicle's connector.
- 

Insert the front part of the sleeve being sure that hammers are inside the connector.
- 

Pull back on the lever until all the way in order enable the locking. In this position, the valve inside the nozzle is open and the sleeve locked in order prevent the unlocking of the nozzle during the refueling.
- 

Remove the nozzle from the vehicle connector.
- 

Place the nozzle on nozzle boot.