



LPG
GROUP



Our Nozzles are installed in lot of gas stations around the world.

They are handled thousands of times every single day, held, used, dropped by distraction and constantly in contact with aggressive substances and used even in extreme climatic situations.

That's why we designed and realized the HQ range.

HQ: Italian high quality which guarantees you the maximum efficiency and resistance.



LPG 500 Series

HQ



The nozzles providing LPG are an Italian product with an excellent quality. The full range is the result of 30 years of strong background. They are produced totally in Italy in LPG Industrial plant with high quality raw materials and it's produced in order obtain the best efficiency.

Type of coupling: ITALIAN DISH

Release system: UNHOOKING SYSTEM
it allows disconnect the nozzle from the taken over with a simply movement of a finger.

Materials: aluminium, brass, NBR and nylon. They ensure a high resistance keeping a value for money.

Available colours:

black, blue, red, yellow, green.

Sleeve: available for nation of use.

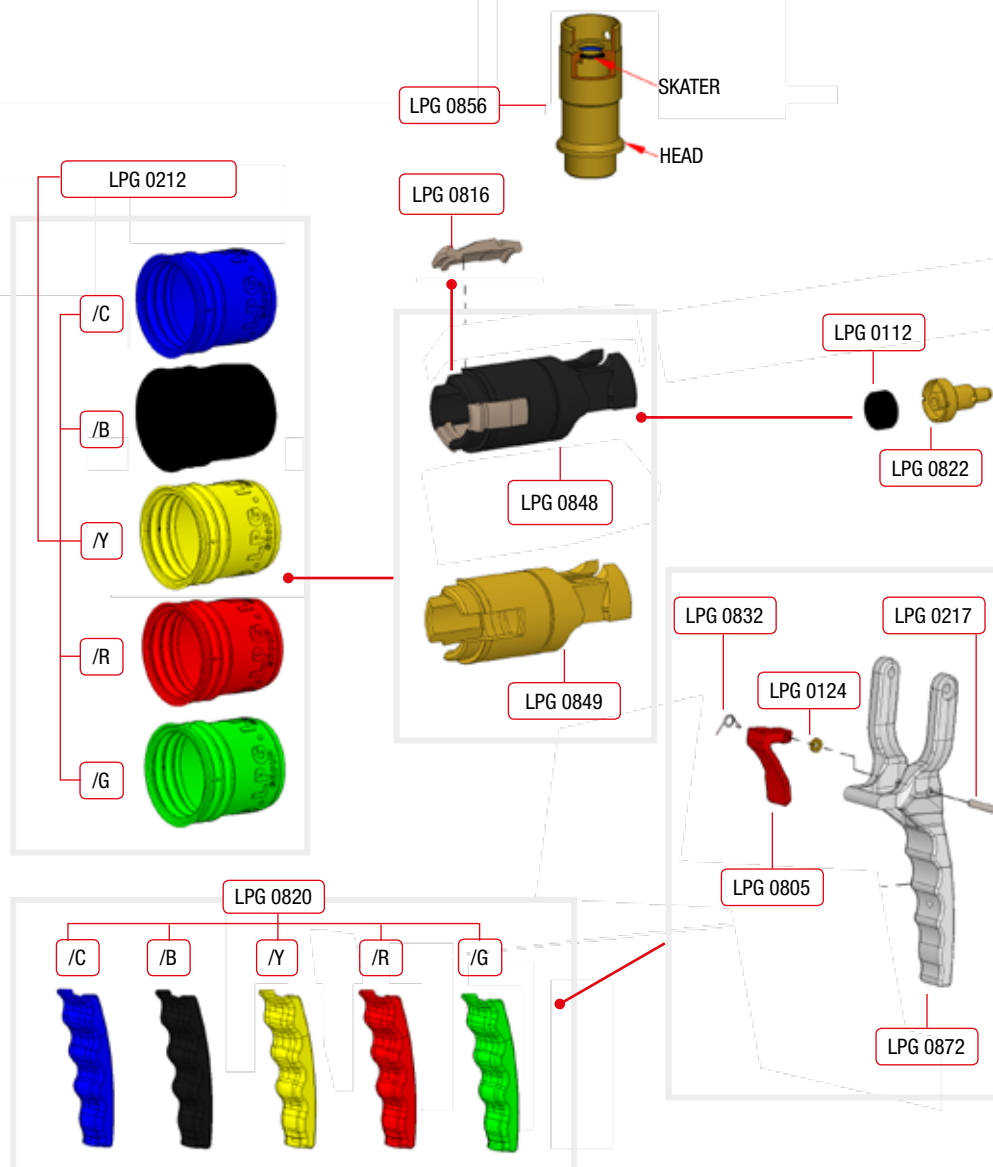
Maintenance: easy and programmable.

It can be carried out by one of your operators and it will maintain your nozzle perfectly efficient and safe.

Safety: "FOOLPROF SYSTEM" block the release of gas if the nozzle is correctly hooked on car taken over. The system allows a perfect alignment between the parts (attack-taken over) by keeping the gas inside and by avoiding a discomfort for the operator.

Release of LPG: extremely low during disconnection.

Optional: lever for housing in nozzle boot of the NBL Series.

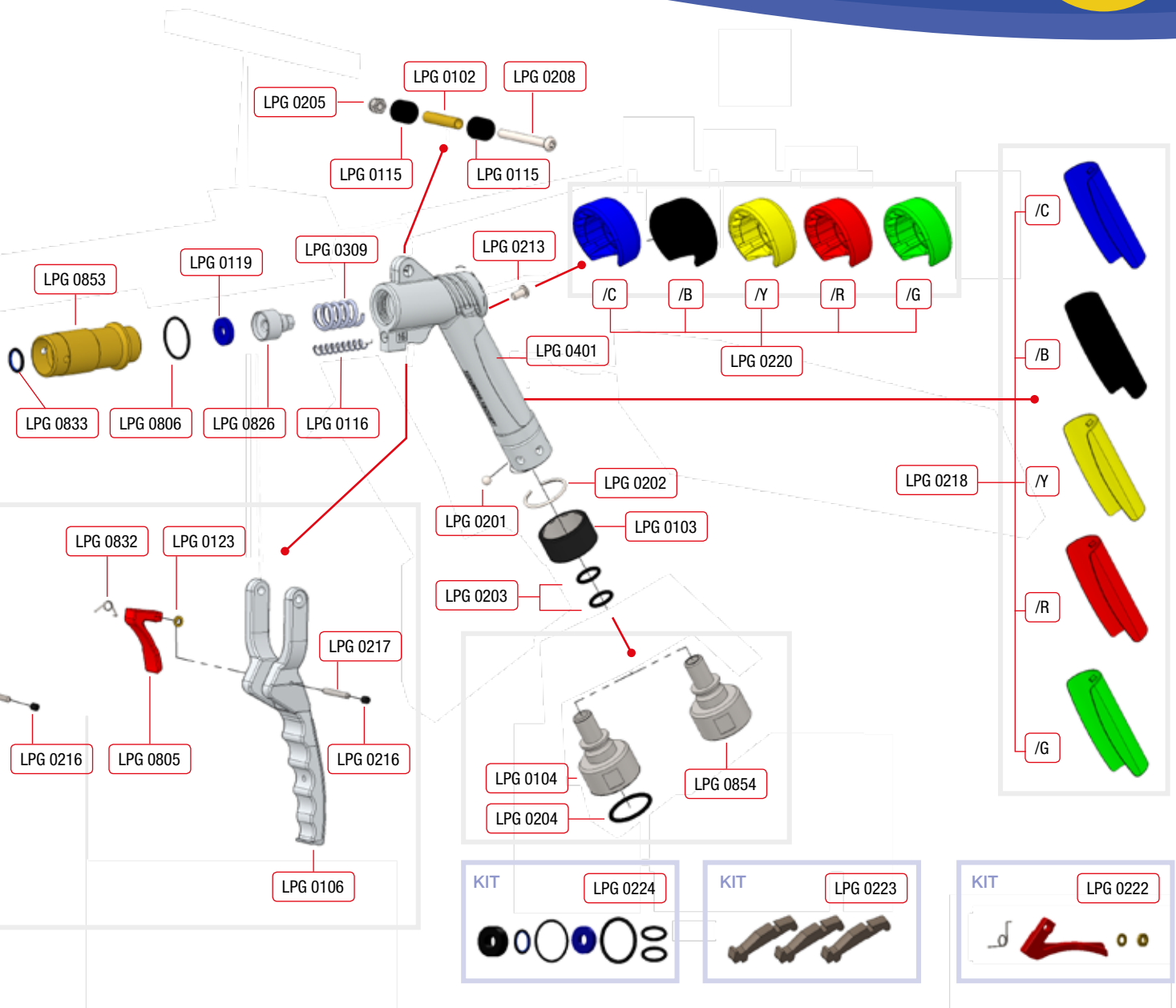


Code	Q.ty	Article	Material
LPG 0102	1	Bushing	Brass
LPG 0103	1	Plus Bush	Steel-Abs
LPG 0104	1	Swivel 1" Gas	Steel
LPG 0106	1	Standard Lever	Aluminium
LPG 0112	1	Piston Gasket	Nbr
LPG 0115	2	Roll	Abs
LPG 0116	1	Spring Sleeve	Steel
LPG 0119	1	Valve Gasket	Sealthane
LPG 0123	1	Trigger Spacer	Steel
LPG 0124	1	Trigger Spacer	Steel
LPG 0201	6	Ball	Steel
LPG 0202	1	Flexible Ring	Steel
LPG 0203	2	O-Ring Corpo	Nbr
LPG 0204	1	Swivel O-Ring	Nbr
LPG 0205	1	Nut	Steel

Code	Q.ty	Article	Material
LPG 0208	1	Bolt	Steel
LPG 0212/B	1	Black Dust Cover	Nbr
LPG 0212/C	1	Blue Dust Cover	Nbr
LPG 0212/G	1	Green Dust Cover	Nbr
LPG 0212/R	1	Red Dust Cover	Nbr
LPG 0212/Y	1	Yellow Dust Cover	Nbr
LPG 0213	1	Bolt	Steel
LPG 0216	1	Lever Screw	Steel
LPG 0217	1	Trigger Pin	Steel
LPG 0218/B	1	Black Body Cover	Abs
LPG 0218/C	1	Blue Body Cover	Abs
LPG 0218/G	1	Red Body Cover	Abs
LPG 0218/R	1	Green Body Cover	Abs
LPG 0218/Y	1	Yellow Body Cover	Abs

LPG 500 Series

HQ



All of our products are ATEX certified.

Code	Q.ty	Article	Material
LPG 0220/B	1	Black Body Insert	Abs
LPG 0220/C	1	Blue Body Insert	Abs
LPG 0220/G	1	Green Body Insert	Abs
LPG 0220/R	1	Red Body Insert	Abs
LPG 0220/Y	1	Yellow Body Insert	Abs
LPG 0222	1	Trigger Kit	
LPG 0223	1	Plus Hammers Kit	
LPG 0224	1	500 Series Gasket Kit	
LPG 0309	1	300 Series Spring Head	
LPG 0401	1	Series Body HQ	Aluminium
LPG 0805	1	Trigger	Tecnopolim.
LPG 0806	1	Head O-Ring	Nbr
LPG 0816	3	Plus Hammer	Brass
LPG 0820/B	1	Black Lever Cover	Abs

Code	Q.ty	Article	Material
LPG 0820/C	1	Blue Lever Cover	Abs
LPG 0820/G	1	Green Lever Cover	Abs
LPG 0820/R	1	Red Lever Cover	Abs
LPG 0820/Y	1	Yellow Lever Cover	Abs
LPG 0822	1	500 Series Piston	Brass
LPG 0826	1	Valve	Aluminium
LPG 0832	1	Trigger Spring	Steel
LPG 0833	1	Complete Skater	Ptife
LPG 0848	1	500 Series Al. Sleeve	Aluminium
LPG 0849	1	500 Series Brass Sleeve	Brass
LPG 0853	1	500 Series Head	Brass
LPG 0854	1	Swivel NPT 3/4	Steel
LPG 0856	1	500 Series Complete Head	
LPG 0872	1	Withe Lever with HS	Aluminium








LPG 500HQ IGSB

Colour					
Code	C = Blue	B = Black	Y = Yellow	R = Red	G = Green
Screw					
Type	S = Standard				
Swivel	 				
Type	G =1" Gas		N = 3/4" NPT		
Sleeve					
Type	I = Italia - DISH				
Lever	 				
Type	0 = Standard		1 = Standard+HS		
Sleeve material	 				
Type	8 = Aluminium		9 = Brass		
Body					
Type	5 = Series HQ				

Maximum operating pressure	25 Bar
Static test	40 Bar
Dynamic test	25 Bar
Maximum Flow Rate	40 l/min @ 8 bar
Release of gas when disconnected	0,98 cm ³
Operating temperature	-40°C ÷ +85°C

Weight	1,25 Kg
Type of coupling	Italia - DISH
Hooking on car	N°3 Martelletti Plus
Swivel connection	1" Gas - 3/4 NPT
Sleeve made of anti-spark material	

INSTRUCTION OF NOZZLE USE

- 
Align nozzle' sleeve to the vehicle's connector.
- 
Insert the front part of the sleeve being sure that hammers are inside the connector.
- 
Pull back on the lever until all the way in order enable the locking. In this position, the valve inside the nozzle is open and the sleeve locked in order prevent the unlocking of the nozzle during the refueling.
- 
Remove the nozzle from the vehicle connector.
- 
Place the nozzle on nozzle boot.